

SECTION 5

Township 78-North; Range 2

EAST OF THE FIFTH PRINCIPAL MERIDIAN

SCOTT COUNTY, IOWA

BLUE GRASS TOWNSHIP

NORTH

SECTION 32 HICKORY GROVE TOWNSHIP

SCALE IN CHAINS

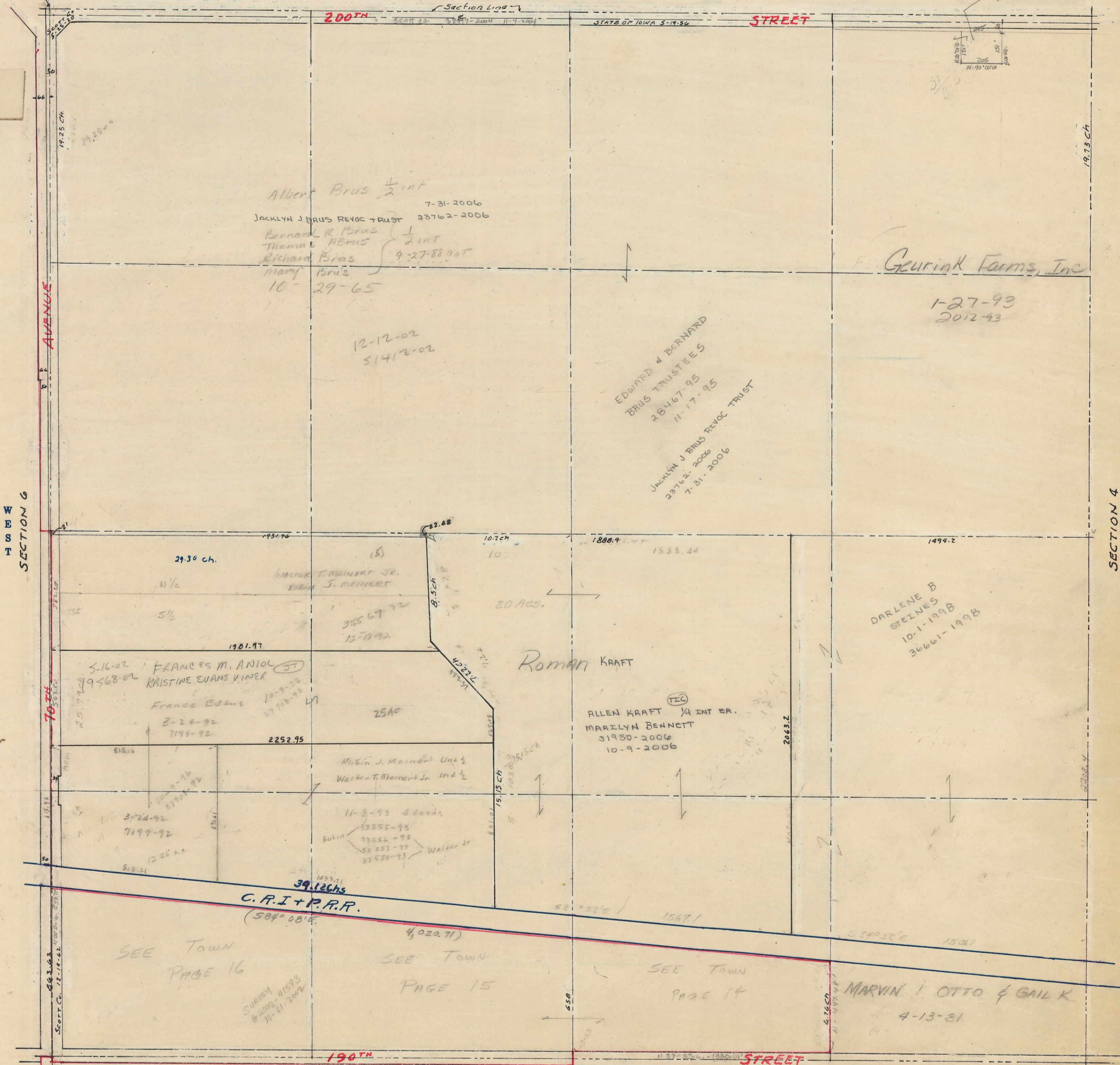


SCALE IN FEET



Transfer Tax 514-36

SURVEY # 21720-2006
10-5-2006



Albert Brus 1/2 int
7-31-2006
JACKLYN J BRUS REVOC TRUST 23762-2006
Bernard R. Brus 1/2 int
Thomas H Brus 1/2 int
Richard Brus 9-27-88 not
Mary Brus 10-29-65

F. Geurink Farms, Inc
1-27-93
2012-93

EDWARD & BERNARD
BRUS TRUSTEES
28467-95
11-17-95
JACKLYN J BRUS REVOC TRUST
23762-2006
7-31-2006

FRANCES M. ANIOL
KRISTINE EVANS VIKER
FRANCE EVANS
3-24-92
7199-92
2252.95
Robin J. Meinert Unit 1/2
Walter T. Meinert Jr Unit 1/2
11-8-93 deeds
Robin 33555-93
33556-93
33557-93
33558-93
Walter Jr

Roman KRAFT
ALLEN KRAFT 1/4 INT EA.
MARILYN BENNETT
31950-2006
10-9-2006

DARLENE B
STEINES
10-1-1998
36661-1998

C.R.I + P.R.R.
(584° 08' E)

SEE TOWN
PAGE 16

SEE TOWN
PAGE 15

SEE TOWN
PAGE 14

MARVIN I OTTO & GAIL K.
4-13-81

SECTION 8 SOUTH